



The New South Wales branch of ANZFSS invites you to our May presentation evening:

Improving Forensic Science: *Professor Gary Edmond*

Professor Gary Edmond is a law professor and Australian Research Council Future Fellow. He also Directs the Program in Expertise, Evidence and Law at the Centre for Interdisciplinary Studies of Law (CISL) at the University of New South Wales (UNSW).

An active commentator on expert evidence in Australia, England, Canada and the US, he is currently involved in a collaborative multidisciplinary project on expert identification evidence with other lawyers, psychologists and forensic scientists, and an empirical study of expert evidence in the courts of New South Wales. He has published dozens of articles on law and science in leading Australian, English and Canadian law, social science and forensic science journals.

As the lead author on the timely paper; *'How to cross-examine forensic scientists: A guide for lawyers'*, Prof Edmond will provide an update on how it has been received in the legal and forensic communities. He will also discuss implications of the paper's recommendations for various forensic disciplines, court cases where it has been applied, and provide an update of his latest research, including his recent paper *'Model Forensic Science'*. Prof Edmond's lecture will be followed by a Q&A session.

Members and non-members are most welcome. Please ensure to RSVP for security requirements at the FASS laboratory.



WHERE: Forensic & Analytical Science Service
Laboratory
Joseph St x Weeroona Rd Lidcombe

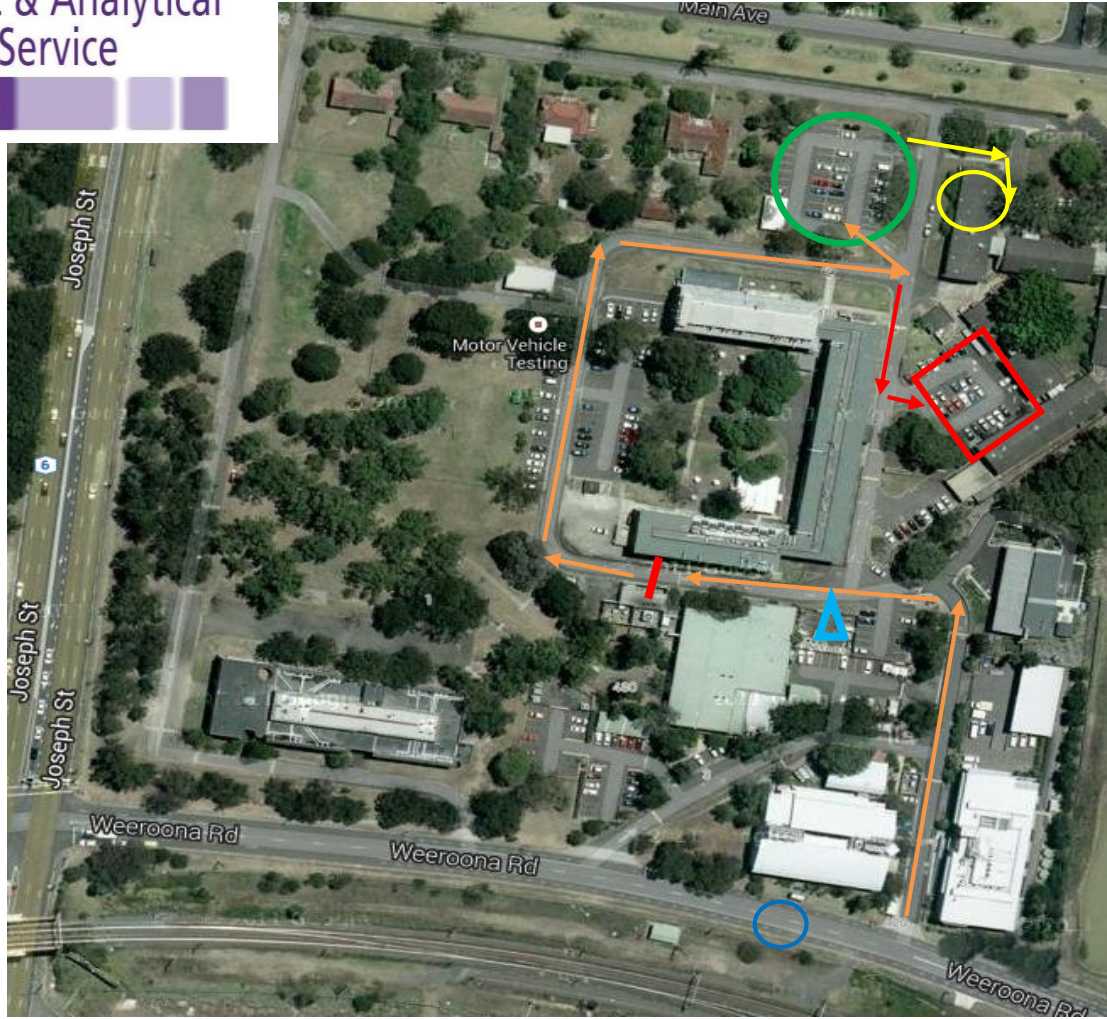
WHEN: Thursday 12th May 2016
Refreshments from 5:30 pm
Presentation from 6pm

COST: Free for members, \$10 for non-members

PLEASE RSVP:
nswbranch@anzfss.org



SITE MAP



If driving: Enter from Weeroona Rd (third driveway on the left). Follow the orange arrows until you get to the security gate indicated by the red bar. A FASS representative will meet you at the gate. Show your membership card or ID if not a member; you will be checked off the RSVP list and the security gate will be opened. Please do not proceed through the gate until you have been checked off the list. Once the gate opens, continue following the orange arrows around the building and park in the top car park (circled in green). An overflow carpark is also available within the campus (outlined in red).

If coming by public transport, the M92 bus (red bus) leaves from Lidcombe Station (northern side), and stops right outside the facility (stop no. 2141143) - indicated by a blue circle on the map. These leave every 10 minutes. See www.131500.com.au for more information

For Pedestrian access go to the gate indicated by the blue triangle, push the intercom button, and tell the receptionist you are here for the ANZFSS NSW Branch meeting.

The theatre is indicated by a yellow circle. Follow the yellow arrows for entrance to the theatre. Please aim to arrive at least 20 minutes before the scheduled start time of 6pm for light refreshments, and security sign-in. Please make sure you have your membership card or Photo ID with you.